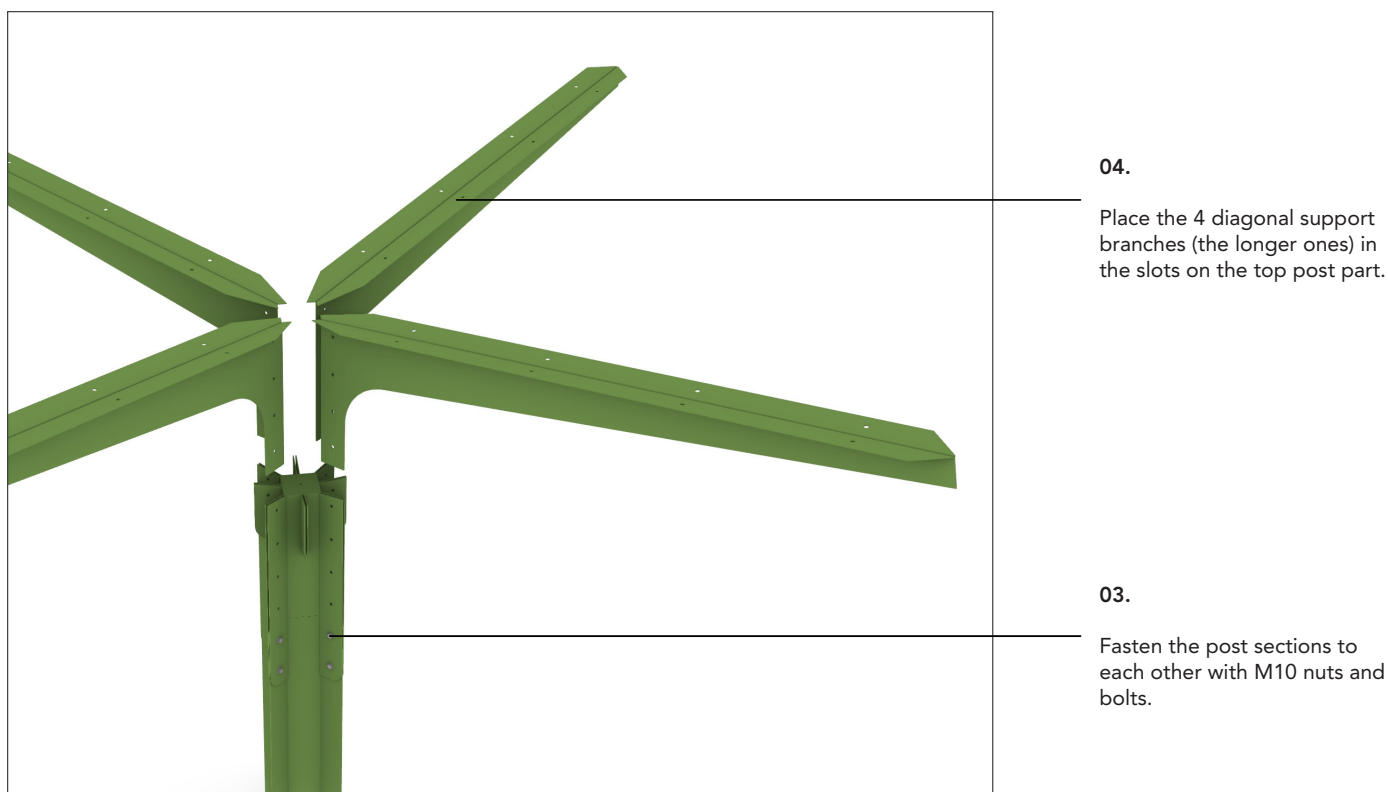
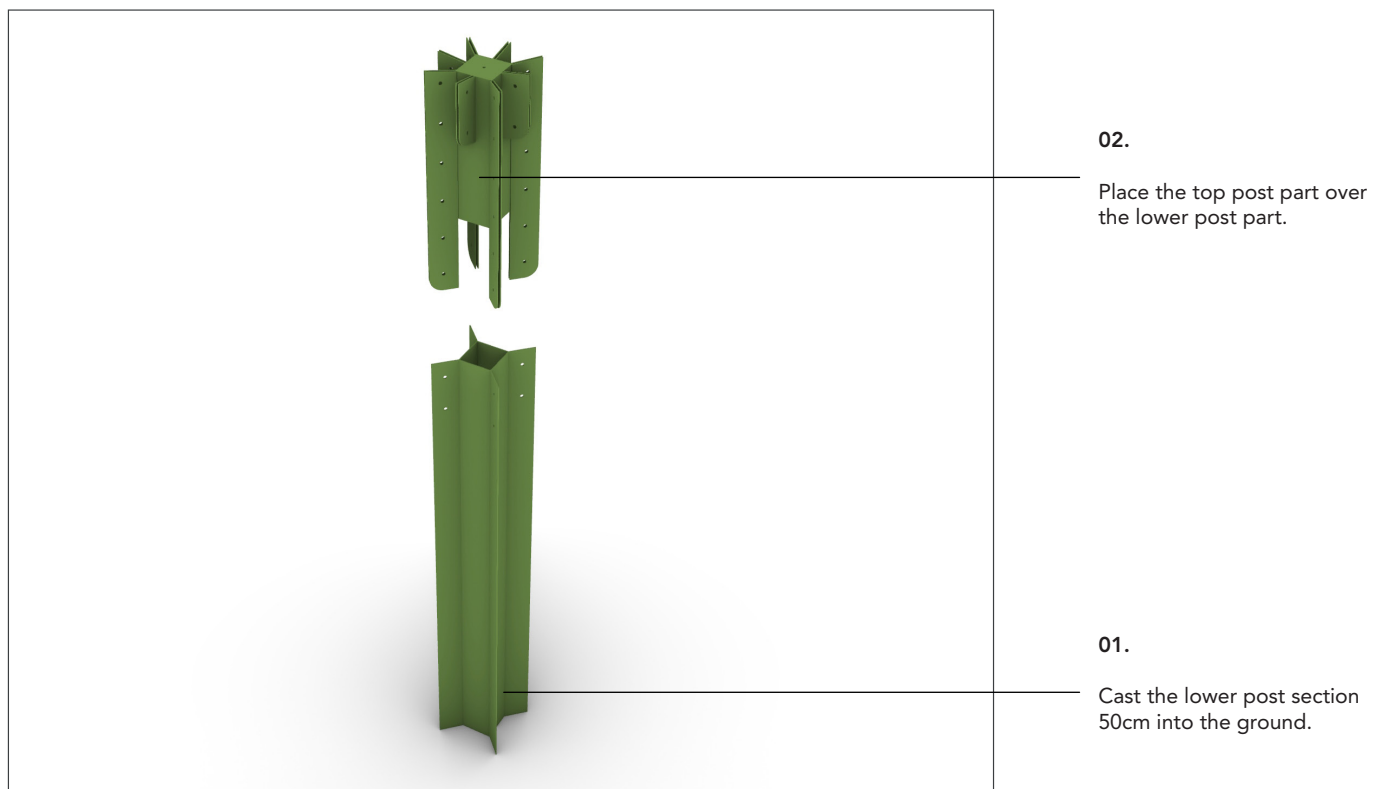
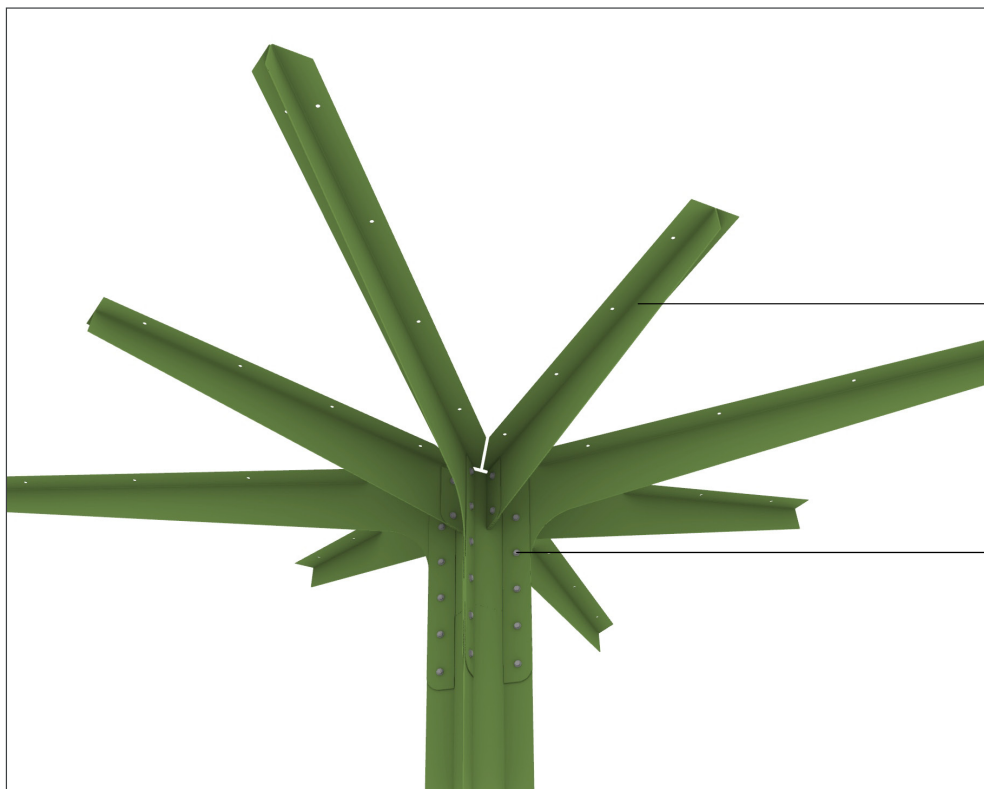


LAGERSTRÖM  
AVENA parasol  
Mounting instructions



LAGERSTRÖM  
AVENA parasol  
Mounting instructions

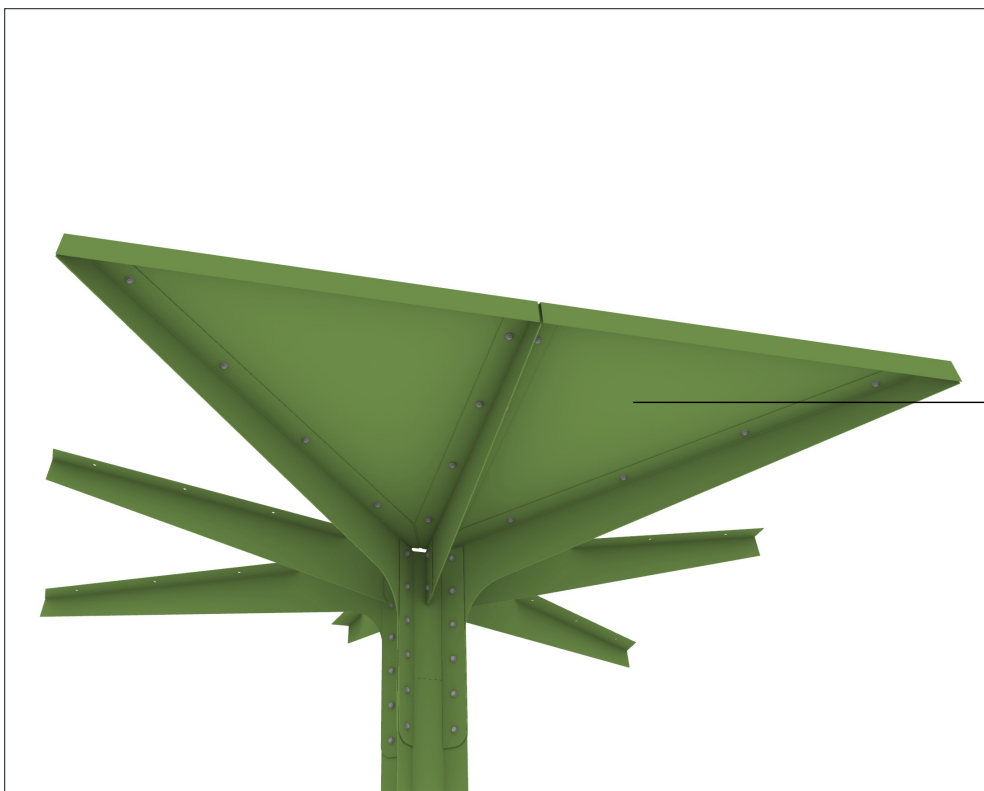


**06.**

Position the 4 shorter branches onto the top post part. fasten with M10 nuts and bolts.

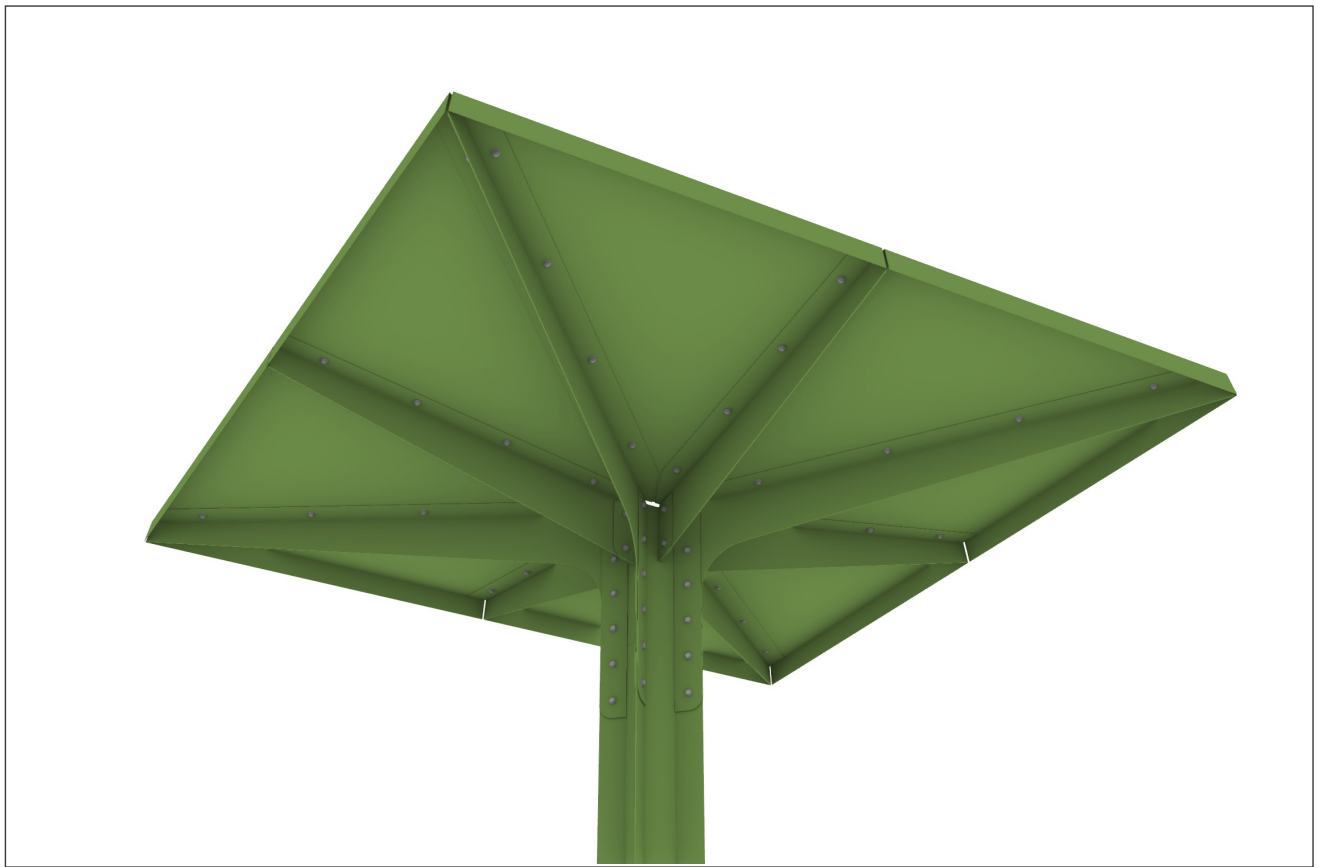
**05.**

Fasten all the branches with M10 nuts and bolts to the top post section.



**07.**

Place the roof sections on the branches as shown and fasten with M10 nuts and bolts.



**08.**

Place the rest of the roof sections and connect with M10 nuts and bolts.