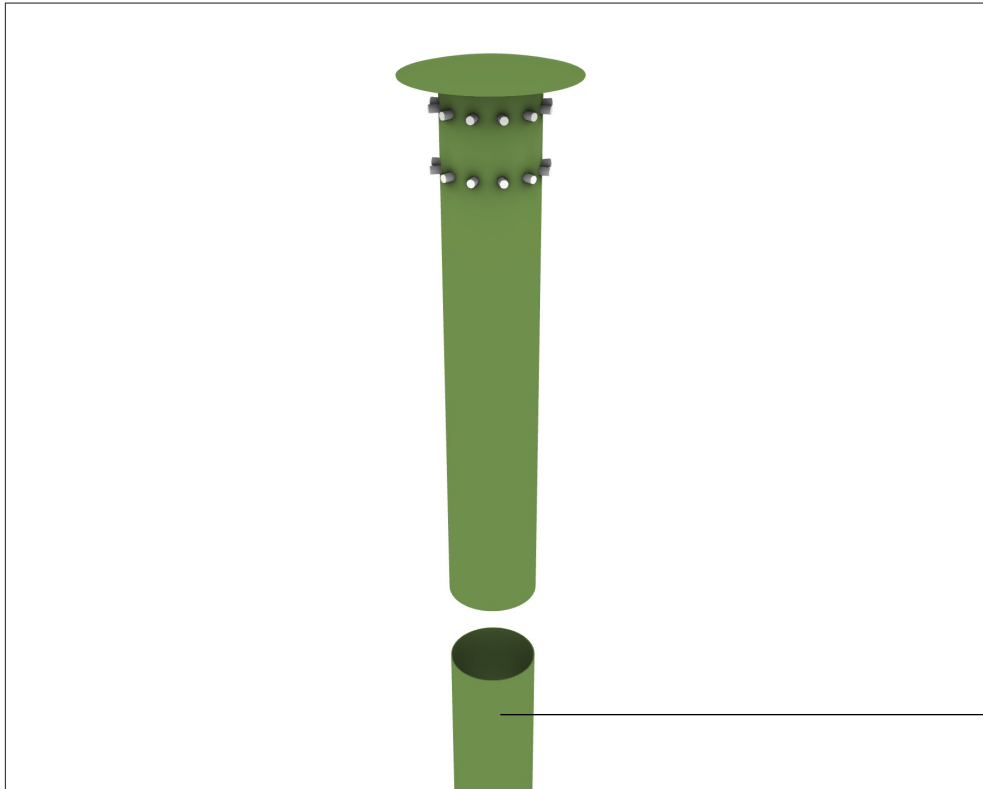
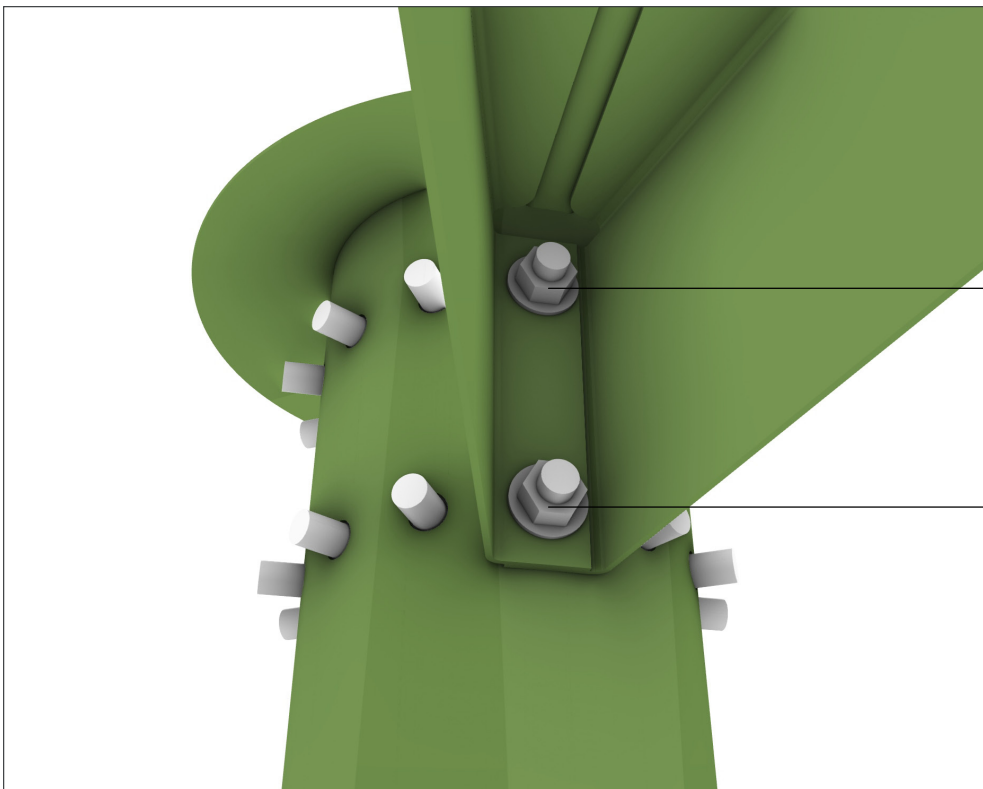


LAGERSTRÖM
MEUM parasol
Mounting instructions



01.

Cast the lower post section 50cm into the ground. Place the top post part over the lower one and bolt to connect.



02.

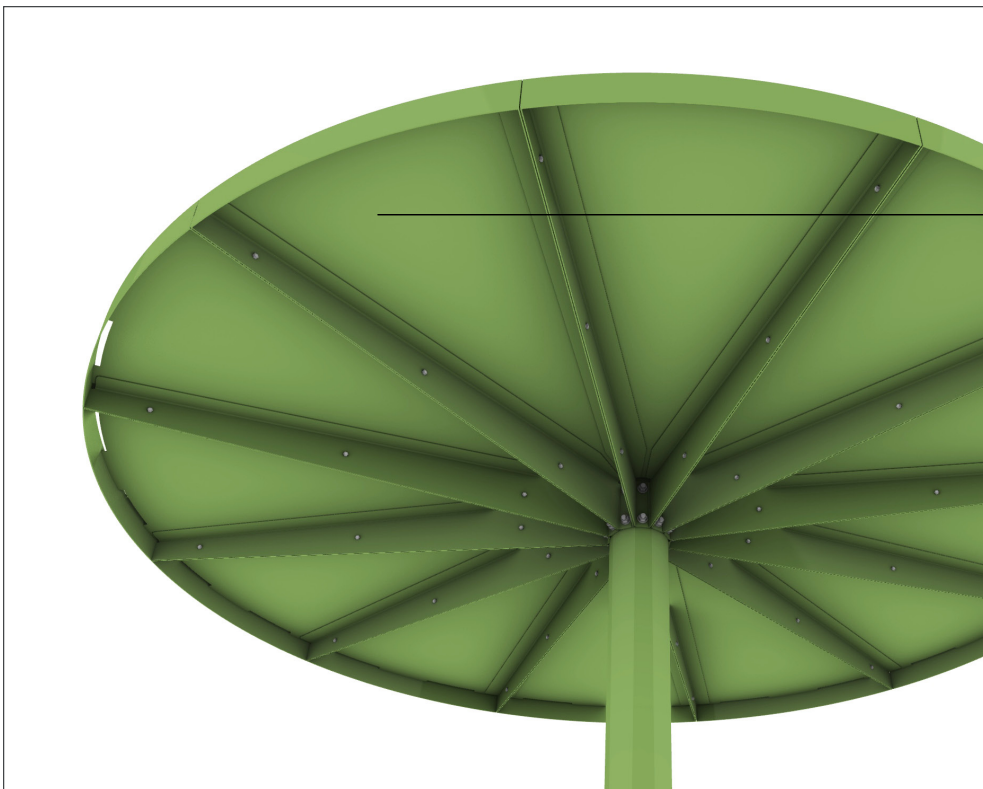
Connect a canopy segment to the top post part with 2 bolts placed over each other.

LAGERSTRÖM
MEUM parasol
Mounting instructions



03.

Connect the next canopy segment to the post with bolts. Attach the second segment to the first one with 3 extra bolts. Make sure the roof sheets are overlapping.



04.

Connect all canopy segments.
All segments should overlap each other.